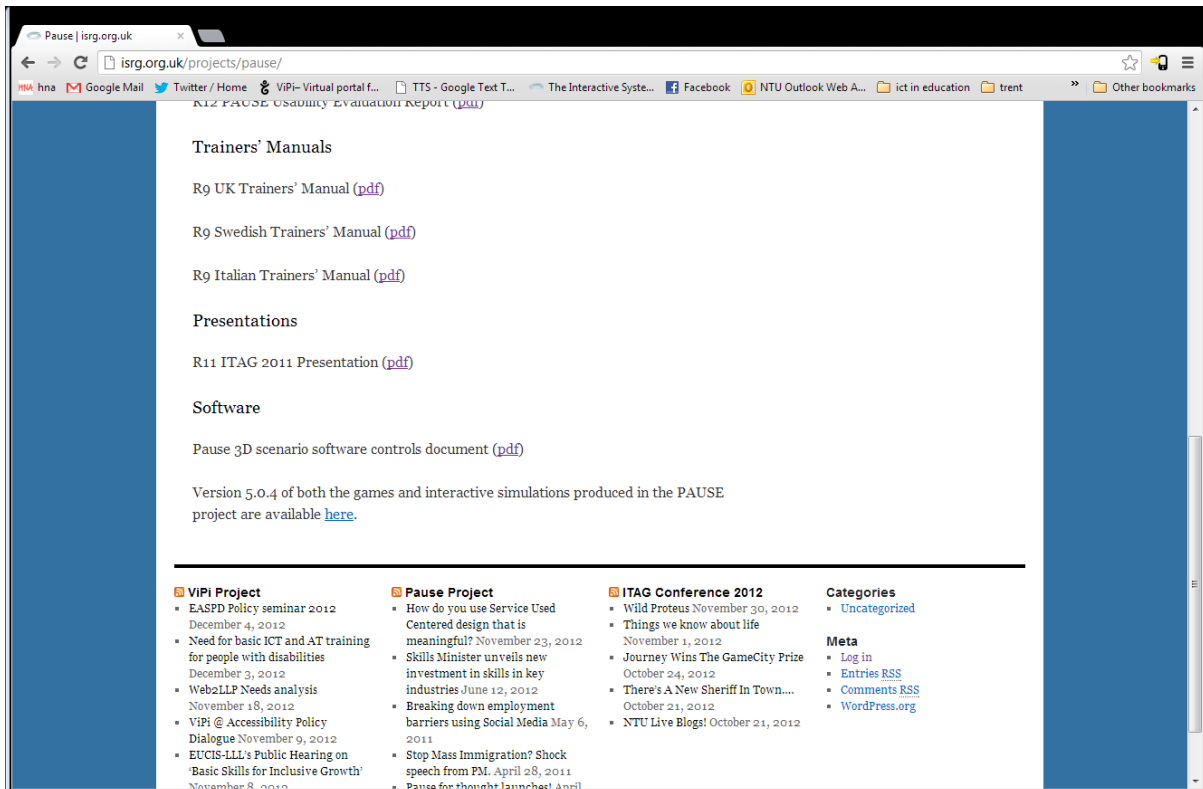
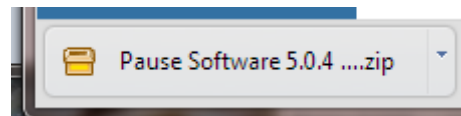
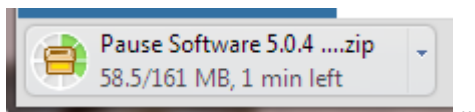


PAUSE Software Installation Instructions

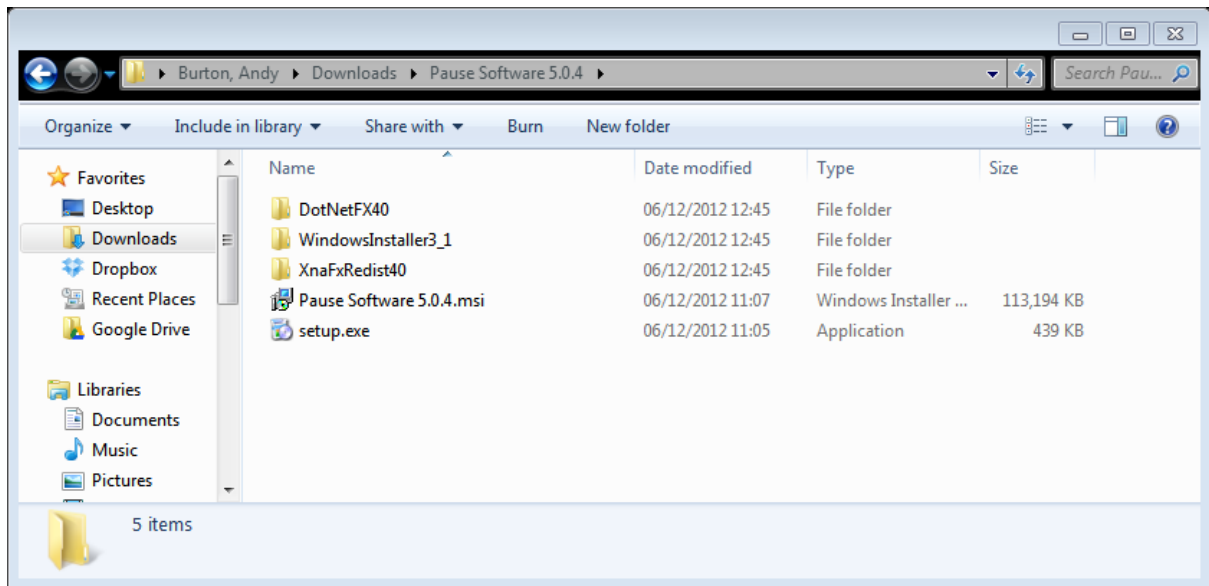
Download the installer zip file from the PAUSE website at... <http://isrg.org.uk/projects/pause/>



Wait for the software to download...



Open the file once it is fully downloaded, extract the contents using your preferred method of unzipping files. This will create an installer folder called 'Pause Software 5.0.4'. Within this folder there is a file called 'setup.exe'. Double click it.



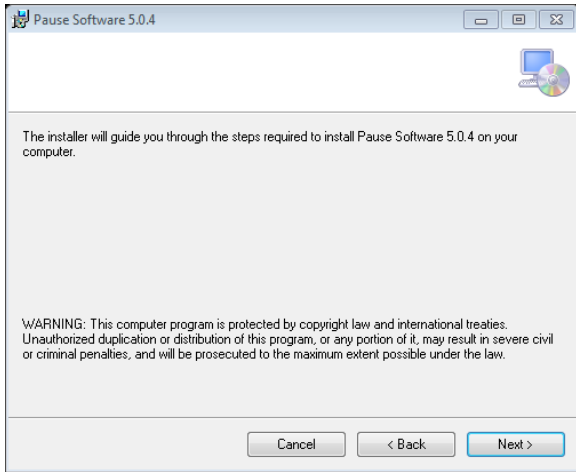
The installer folder containing the setup.exe file. Be sure to extract this folder from the zip before running the Setup file. (NB running the setup file from within the zipped file will not work!)

On running the installer you will see the following screens...

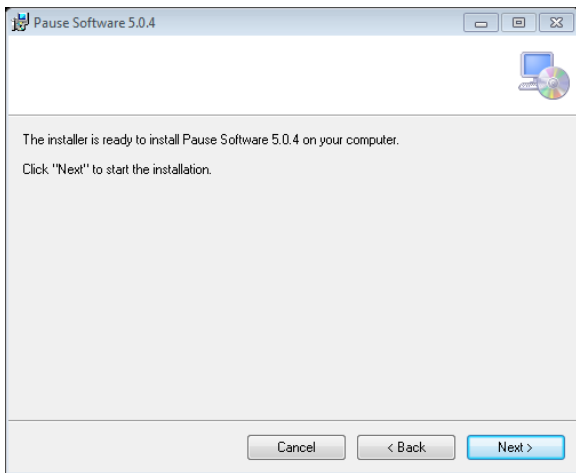
[**IMPORTANT NOTE**... The installer may also require installation of certain required add ons such as components of Microsoft XNA or the Microsoft .NET Framework. If your computer requires these to be installed it will download them and guide you through the installation process. This will require an internet connection]



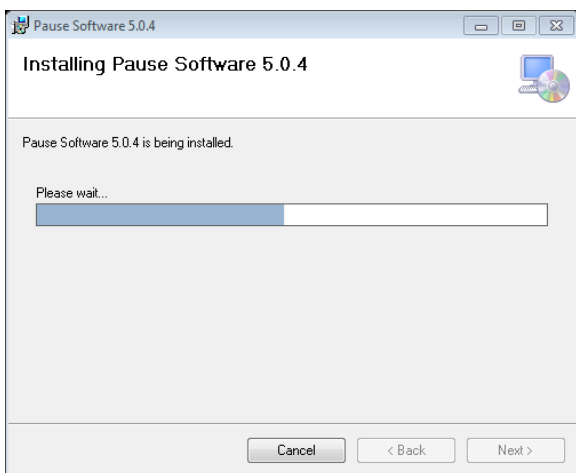
Click Next.



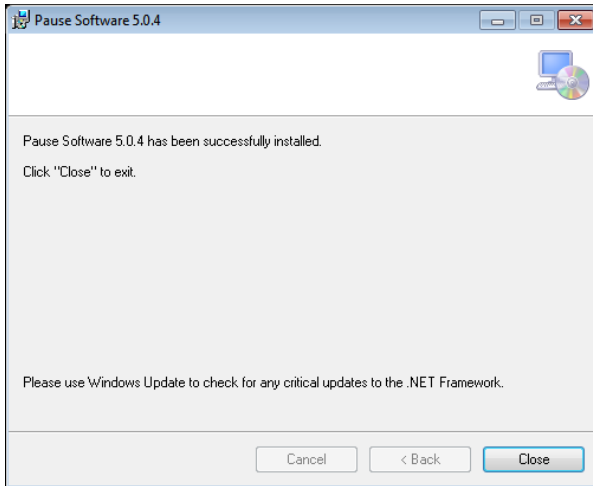
Click Next



Click Next.



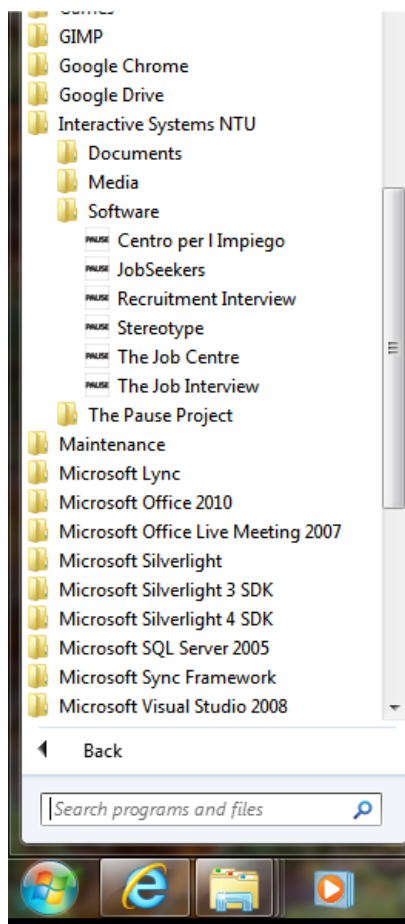
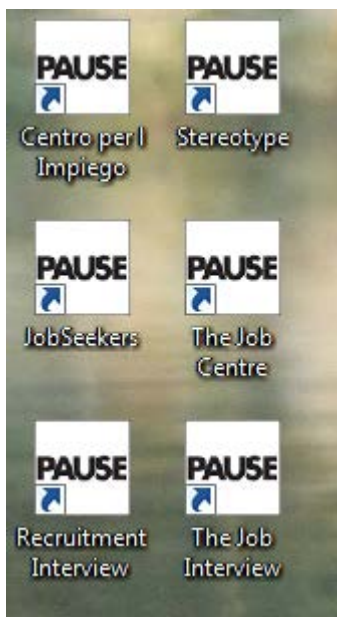
Wait for the installer to show the following...



Click close.

The software is now installed.

You now have the following shortcuts on your desktop and a set of links in the start menu under Interactive Systems NTU...



Use the links or desktop shortcuts to run the software.